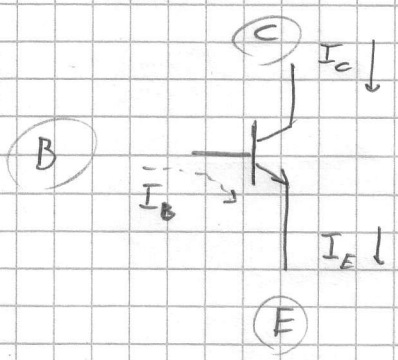
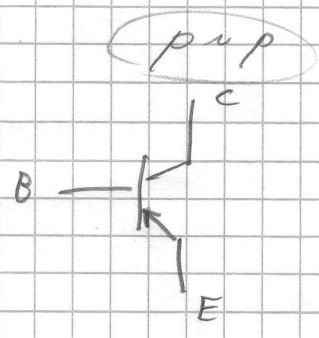
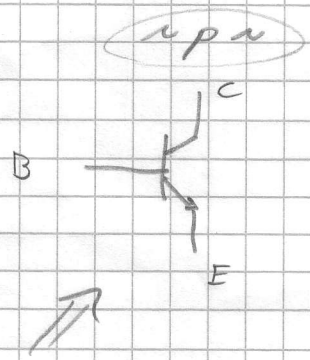


Transistors

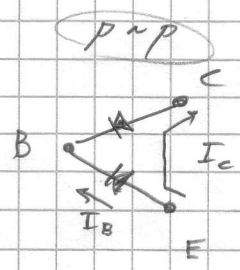
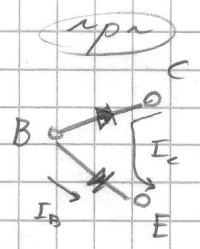
First active component that we introduce. \rightarrow Power gain \leftarrow



Simple model



- Rules:
- ① C must be more + than E
 - ② B-E & B-C behave like diodes:



- ③ There are max. values for $I_C, I_B,$ & V_{CE}

- ④ IF 1-3 are obeyed,

$I_C = \beta I_B$ w/ $\beta \sim 100$

